

Silencer MIDI

► Reduces noise from exhaust on MIDI piINLINE®.

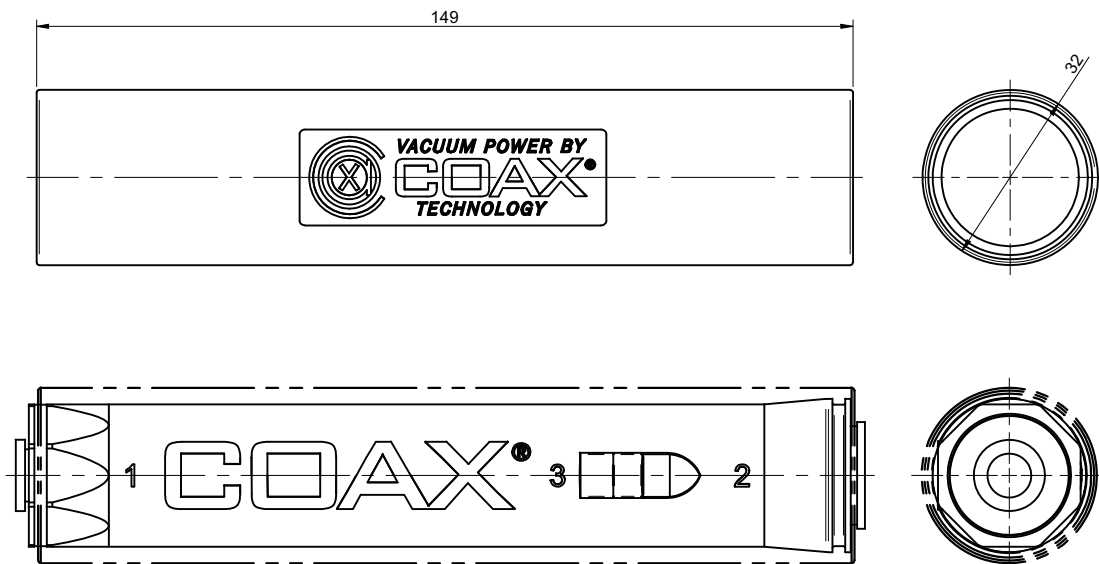


Technical data

Description	Unit	Value
Noise level, max. reduction	dBA	15
Material		Al
Weight	g	70

Ordering information

Description	Art. No.
Silencer piINLINE® MIDI	0123031



P3010 mounting rail

- ▶ Rigid and easy to mount
- ▶ For dynamic loads

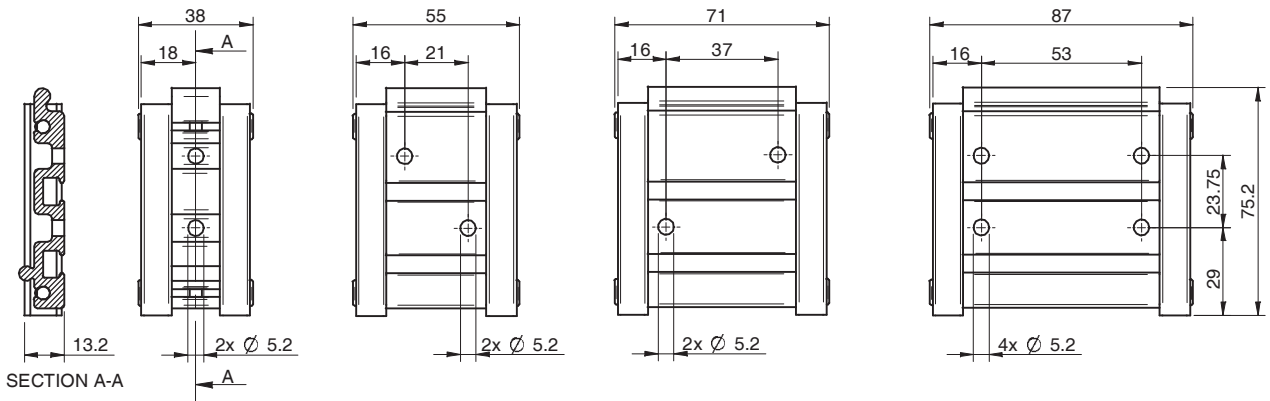


Technical data

Description	Unit	Value
Temperature range	°C	-10-50
Weight	g	60-120
Material		Al, SS

Ordering information

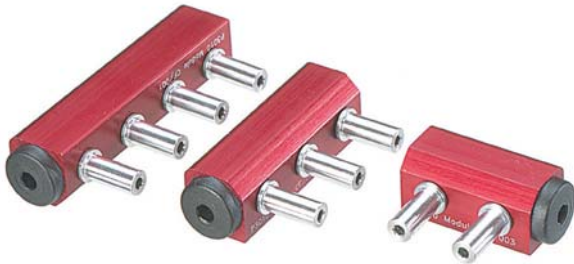
Description	Art. No.
Mounting rail P3010, one pump module	0106167
Mounting rail P3010, 2 pump modules	0106162
Mounting rail P3010, 3 pump modules	0106168
Mounting rail P3010, 4 pump modules	0106160



Accessories

P3010 common-feed adapters

- One compressed air connection required to feed air to several pumps.

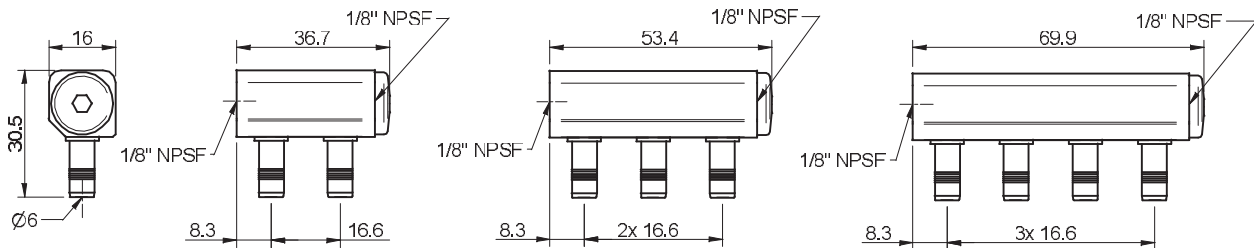


Technical data

Description	Unit	Value
Feed pressure, max.	MPa	0.7
Temperature range	°C	-10–50
Weight	g	20–40
Material		Al, PPS

Ordering information

Description	Art. No.
Common-feed adapter P3010, 2 pump modules	0106157
Common-feed adapter P3010, 3 pump modules	0106158
Common-feed adapter P3010, 4 pump modules	0106159



P3010 exhaust adapter



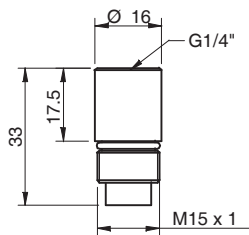
- ▶ Connection of exhaust air
- ▶ For clean environment
- ▶ Directed blowing air

Technical data

Description	Unit	Value
Temperature range	°C	-10–50
Weight	g	8
Connection, exhaust		G1/4" / Ø16 mm
Material		Al

Ordering information

Description	Art. No.
Exhaust adapter	0106344



Mountings P5010



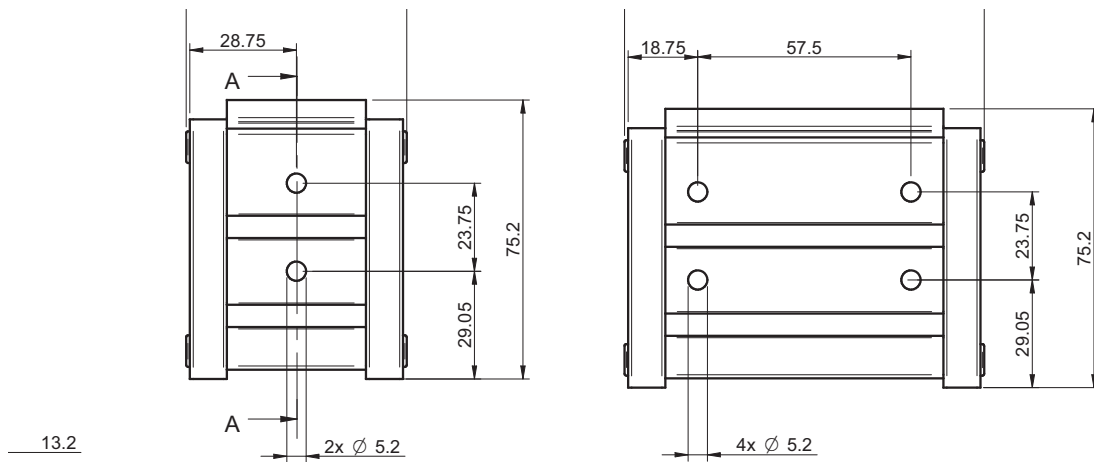
- ▶ P5010 Piab mounting rail
 - Rigid and suitable for dynamic loads.
 - Available for one or two pump modules.
- ▶ P5010 DIN mounting
 - Fits industry standard DIN rail systems.
 - Easy to mount and dismount.

Technical data

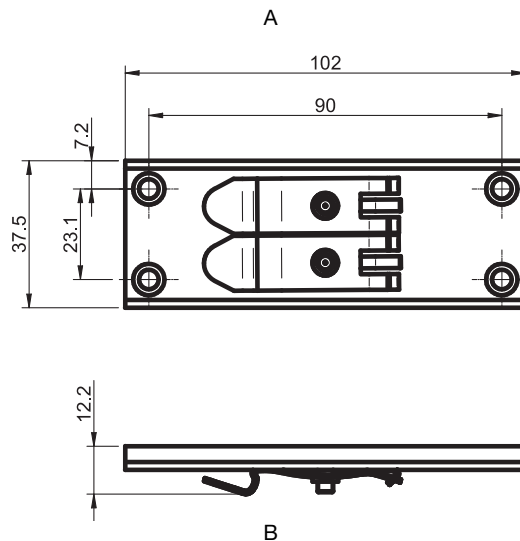
Description	Unit	Value
Temperature range	°C	-10-80
Weight	g	122-203
Material		Al, SS

Ordering information

	Description	Art. No.
A	Mounting rail x1 P5010	0118209
A	Mounting rail x2 P5010	0118208
B	Mounting rail DIN P5010	0117763



ION A-A



Common feed adapter P5010



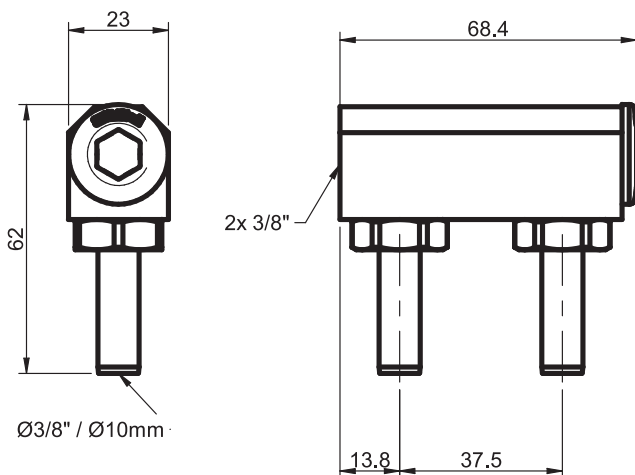
- ▶ One compressed-air connection required to feed air to two P5010 vacuum pumps.
- ▶ Suitable when two P5010 pumps are used for a dual-channel system (shoe-laced system).

Technical data

Description	Unit	Value
Temperature range	°C	-10-80
Weight	g	70
Material		Al, NBR, PA

Ordering information

Description	Art. No.
Common feed adapter Ø10 mm P5010	0117762



Vacuum filters



- ▶ To filter dust and other small particles from the vacuum flow.
- ▶ Reduces the risk of operation breakdown or stoppage in the pump.
- ▶ Replaceable filter element.
- ▶ Available with special filter element with increased filter area

Technical data

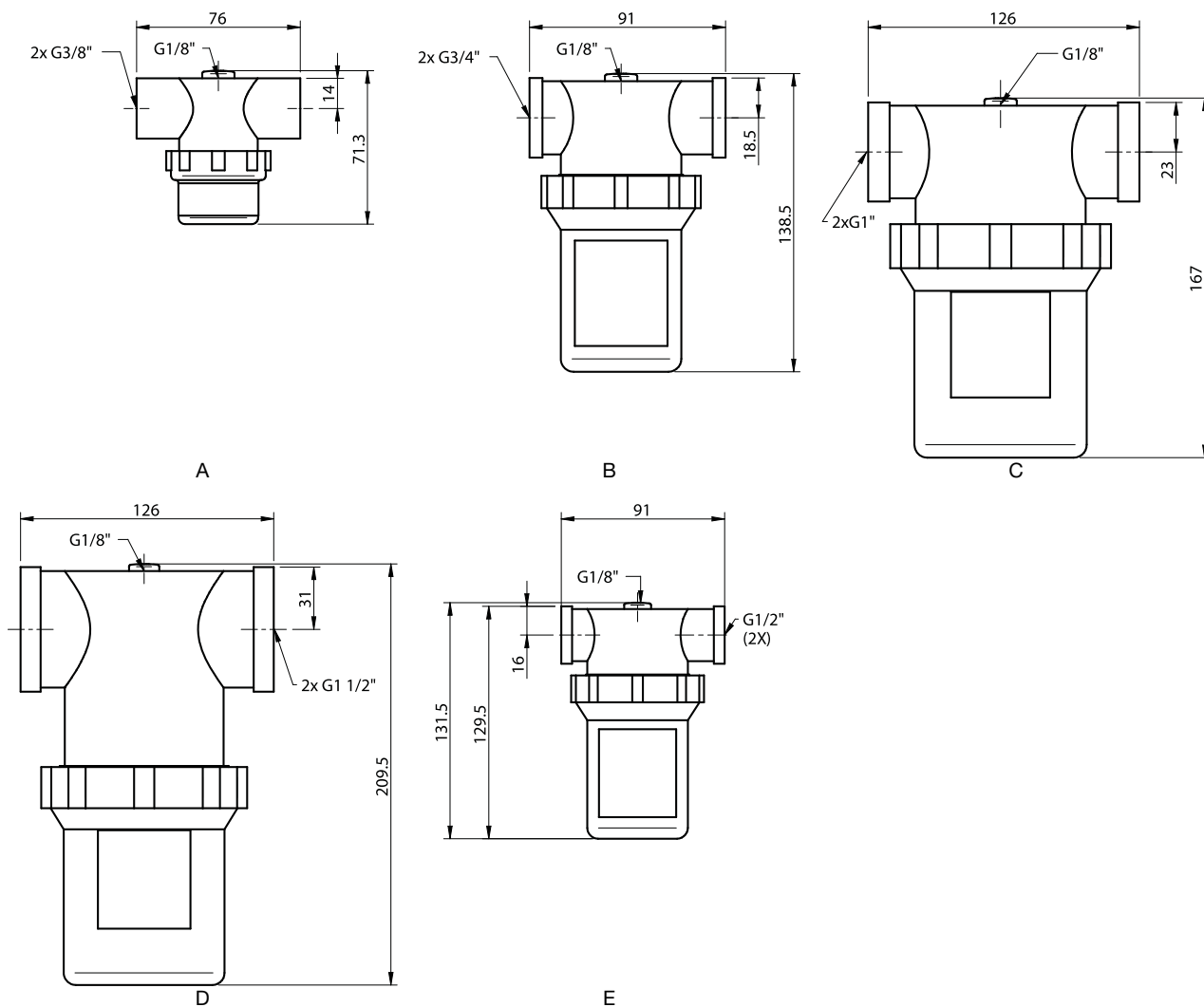
Description	Unit	Value
Pressure range	MPa	-0.1–0 MPa
Material		PE, PP, PA
Temperature range	°C	-20–80
Removal efficiency	μm	10

Technical data, specific

Description	Unit	Value				
		3116671	3116651	3116652	3116672	3116653
Weight	g	70	168	170	424	550
Flow nominal	l/s	2.5	15	15	42	85
Volume Internal	cm ³	45	195	205	495	675
Filter area	m ²	0.003	0.010	0.010	0.019	0.023

Ordering information

	Description	Art. No.
A	Vacuum filter G3/8"	3116671
B	Vacuum filter G3/4"	3116652
C	Vacuum filter G1"	3116672
D	Vacuum filter G1½"	3116653
E	Vacuum filter G1/2"	3116651
E	Vacuum filter G1/2" (special)	0110521
B	Vacuum filter G3/4" (special)	0110522
D	Vacuum filter G1 1/2" (special)	0110523



Technical data, accessories

Description	Unit	Value					
		3116673	3116674	3116675	3116676	3116223	3116224
Weight	g	7	26	50	74	80	144
Filter area	m ²	0.003	0.010	0.019	0.023	0.028	0.074
Removal efficiency	µm	10	10	10	10	5	5

Ordering information, accessories

Description	Art. No.
Filter element 3/8"	3116673
Filter element 1/2" & 3/4"	3116674
Filter element 1"	3116675
Filter element 1½"	3116676
Filter element 1/2" & 3/4" (special)	3116223
Filter element 1½" (special)	3116224

Vacuum filter S



- ▶ To filter dust and other small particles from the vacuum flow.
- ▶ Reduces the risk of operation breakdown or stoppage in the pump.

Technical data

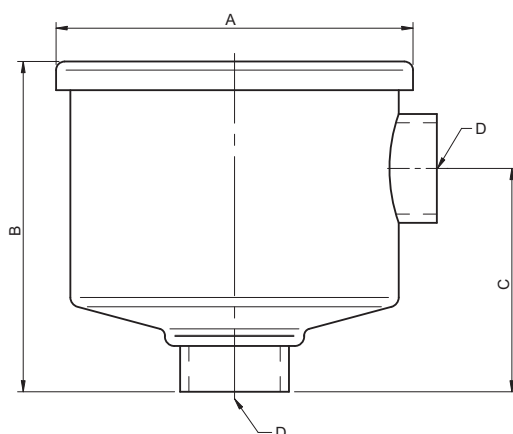
Description	Unit	Value
Pressure range	Mpa	-0.1-0
Material		SS, NBR, PE
Temperature range	°C	-30-90
Removal efficiency	µm	5

Technical data, specific

Description	Unit	Value			
		3116709	3116654	3116710	0111311
Weight	kg	1.0	2.1	4.9	4.2
Flow	NI/s	16.5	37.7	82.6	100
Volume, internal	cm ³		3146	6177	7000
Filter area	cm ²	600	1900	4200	7500

Ordering information

Description	Art. No.
Vacuum filter 1", steel	3116709
Vacuum filter 1 1/2", steel	3116654
Vacuum filter 2", steel	3116710
Vacuum filter 2 1/2", steel	0111311



Measures

Description	Art. No.	A [Ø mm]	B [mm]	C [mm]	D
Vacuum filter 1", steel	3116709	150	111	67	G 1"
Vacuum filter 1 1/2", steel	3116654	185	170	115	G 1 1/2"
Vacuum filter 2", steel	3116710	220	260	130	G 2"
Vacuum filter 2 1/2", steel	0111311	200	260	134	G 2 1/2"

Filter fittings



- ▶ Adjustable mounting angle due to the use of locking nut.
- ▶ No need for seal with Teflon tape or glue due to the use of O-ring seals.

Technical data

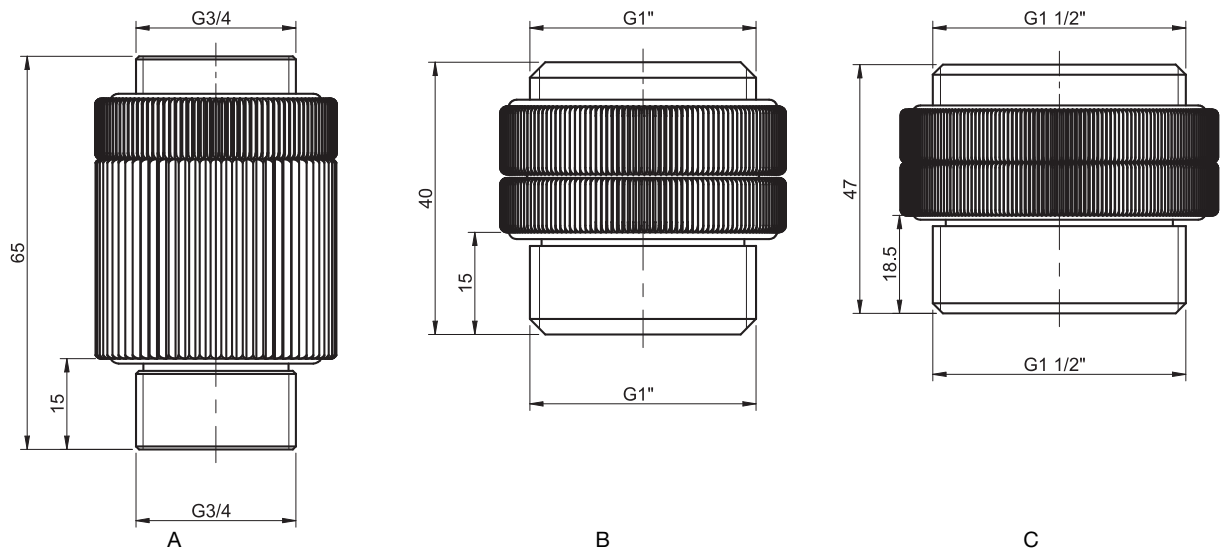
Description	Unit	Value
Material		Al, NBR
Temperature range	°C	-20-80

Technical data, specific

Description	Unit	Value		
		3330052	0113979	3330051
Weight	g	90	58	110
Connection		2 x G3/4"	2 x G1"	2 x G1 1/2"

Ordering information

	Description	Art. No.
A	Filter fitting 3/4"	3330052
B	Filter fitting 1"	0113979
C	Filter fitting 1 1/2"	3330051



Silencers



- ▶ Reduce noise from exhaust
- ▶ Flow-through design

Technical data

Description	Unit	Value	
			0117605
Noise level reduction, approximately	dB(A)	-10	-10
Temperature range	°C	-20-100	-20-100
Material		PA, HDPE	Al, POM, HDPE, SS

Technical data, specific

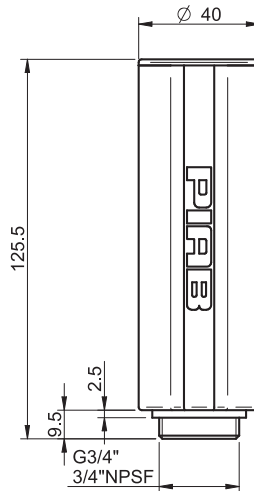
Description	Unit	Value				
		3216009	3216002	0112499/0113003	0103224	0117782
Weight	g	14	61	120	425	893

Ordering information

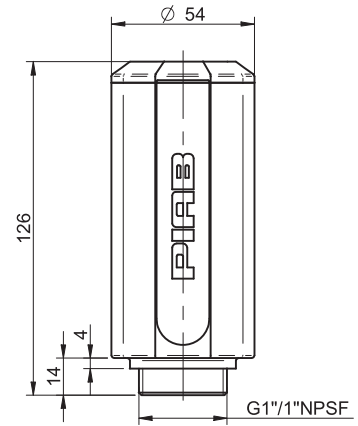
	Description	Art. No.
A	Silencer G3/8"	3216009
B	Silencer G3/4"	3216002
C	Silencer G1"	0112499
C	Silencer 1" NPSF	0113003
D	Silencer G1½"	0103224
E	Silencer G2½"	0117782



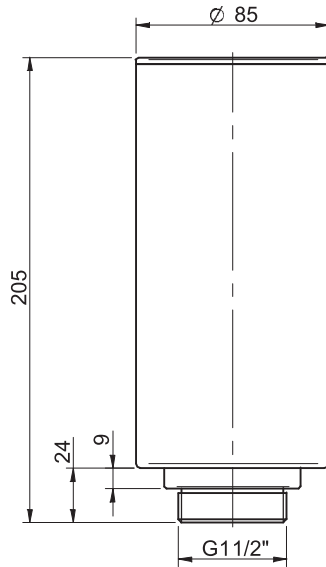
A



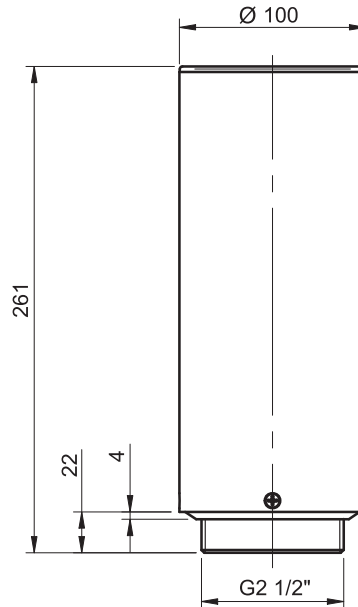
B



C



D



E

Silencer COAX®



- ▶ Reduces noise from the exhaust
- ▶ Compatible with aluminium holders for MINI and MIDI COAX® cartridges
- ▶ Simple snap locking when mounting
- ▶ Through-flow design that eliminates the risk of impaired performance due to clogging of the silencer

Technical data

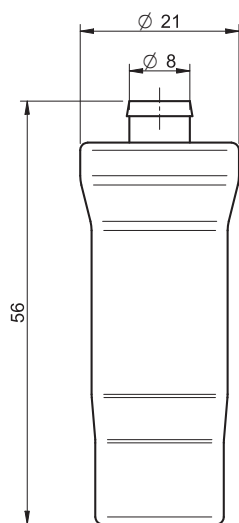
Description	Unit	Value
Material		PA, TPU, PE
Temperature range	°C	-20-80
Noise level reduction	dB(A)	≥10

Technical data, specific

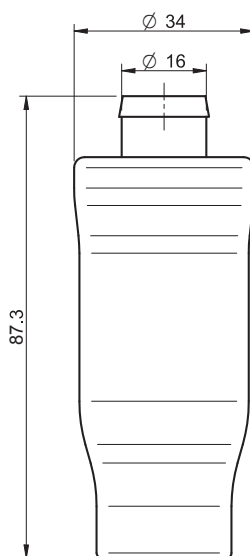
Description	Unit	Value	
		0111977	0111976
Weight	g	8.64	36.56

Ordering information

	Description	Art. No.
A	Silencer COAX® MINI	0111977
B	Silencer COAX® MIDI	0111976



A



B

Vacuum gauge and manometers



- ▶ Analogue indicator, springjoint – lever system
- ▶ The instruments include nut for installation on a panel

Technical data

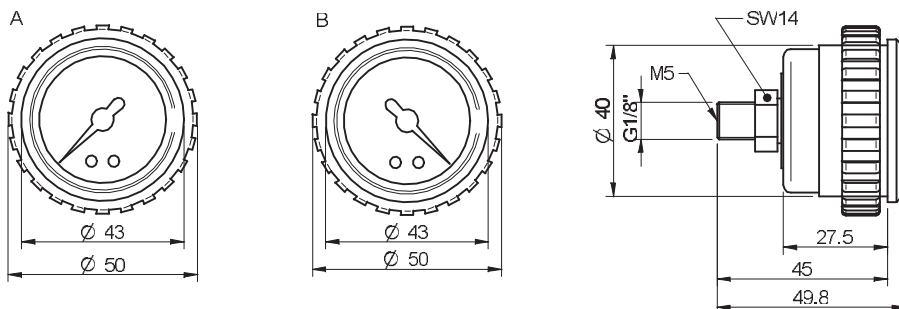
Description	Unit	Value
Accuracy, of full scale	%	2.5
Material		CuZn, ABS, PMMA

Technical data, specific

Description	Unit	Value		
		3101602	3101603	3101626
Weight	g	90	55	50
Signal range	MPa	0–0.1	0–1	0–0.25
Medium		Vacuum	Over pressure	

Ordering information

	Description	Art. No.
B	Vacuum gauge 100 -kPa, with nut	3101602
A	Manometer 1 MPa	3101603
A	Manometer 250 kPa	3101626



Connection kits



- ▶ Push-in connectors with hose dimensions compatible with the pump connections.
- ▶ Corrosion-resistant material.
- ▶ Complete kit for one pump.

Technical data

Description	Unit	Value		
		Connection kits	Barrel nipples	Hose connectors
Temperature range	°C	-25-75	0-60	0-80
Material		POM, NBR, SS, CuZn, Al	PVC	PPG

Technical data, specific

Description	0104901	0104902	3207005	0104903	3207010	3401008
Connection kit for vacuum pump	MINI 5	MINI 10	MINI 5	MINI 5-20	CLASSIC 25-120	MAXI*
Connection plate	A	A	B	B, C	D	All
Hose dimension ** for compressed air	d=2 mm	d=4 mm	D=4 mm	D=6 mm	D=8 mm	D=6 or 4 mm
Hose dimension ** for vacuum	D=4 or 6 mm	D=6 or 8 mm	D=8 mm	D=10 mm	d=12, 19, 25 mm	—

* Remote control

** d = inner diameter, D = outer diameter

Technical data, specific

Description	0118715	0118716	0118717	0118714	0106856	0106857	0106858	0106860
Thread	G1 1/2"	G2"	G2 1/2"	G2 1/2"	G1 1/2"	G1 1/2"	G2"	G2"
Hose dimension	—	—	—	Ø75	Ø40	Ø50	Ø60/64	Ø50
Max pressure (bar)*	PN16	PN16	PN16	PN10	PN10	PN10	PN10	PN10

* at 20 °C, water temperature.

Ordering information

Description	Art. No.
Connection kit for pump MINI 10, connection plate A	0104902
Connection kit for pump MINI 5-20, connection plate C and pump MINI 10-20, connection plate B	0104903
Connection kit for pump CLASSIC 25-120, connection plate D	3207010
Connection kit for pump MAXI*, all connection plates	3401008
Barrel nipple G1½" PVC	0118715
Barrel nipple G2" PVC	0118716
Barrel nipple G2½" PVC	0118717
Hose connector 2½"-75, plastic	0118714
Hose connector 1½"-40, plastic	0106856
Hose connector 1½"-50, plastic	0106857
Hose connector 2"-60/64, plastic	0106858
Hose connector 2"-50, plastic	0106860